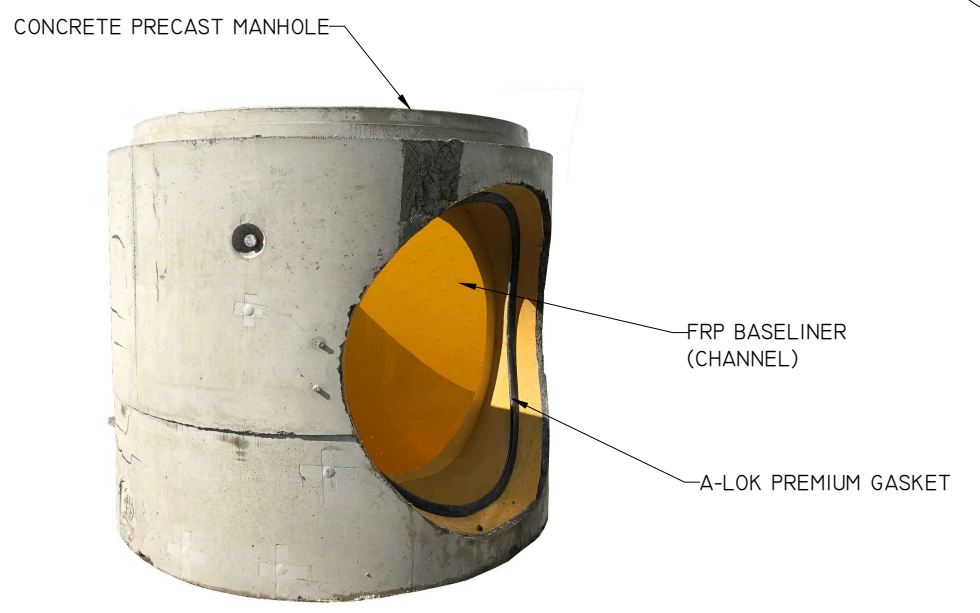
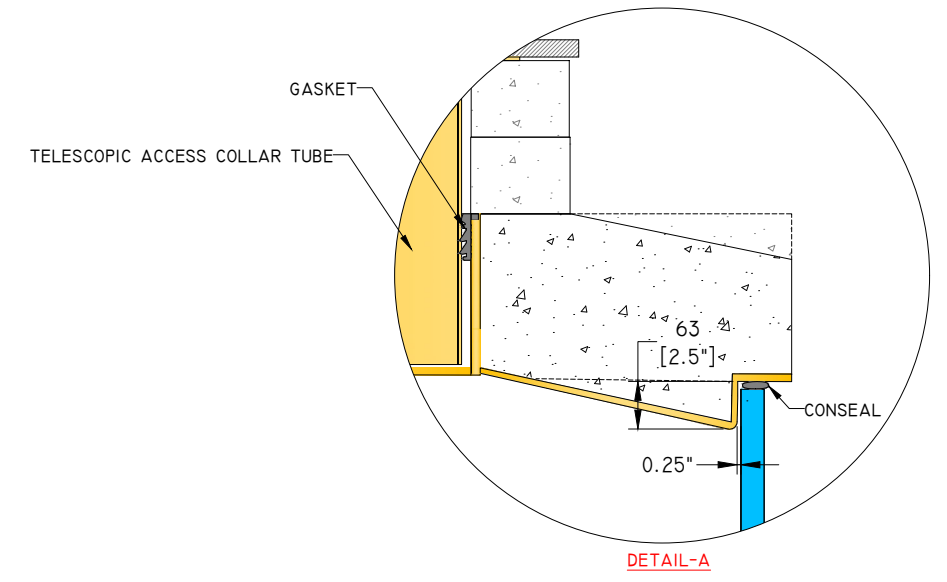
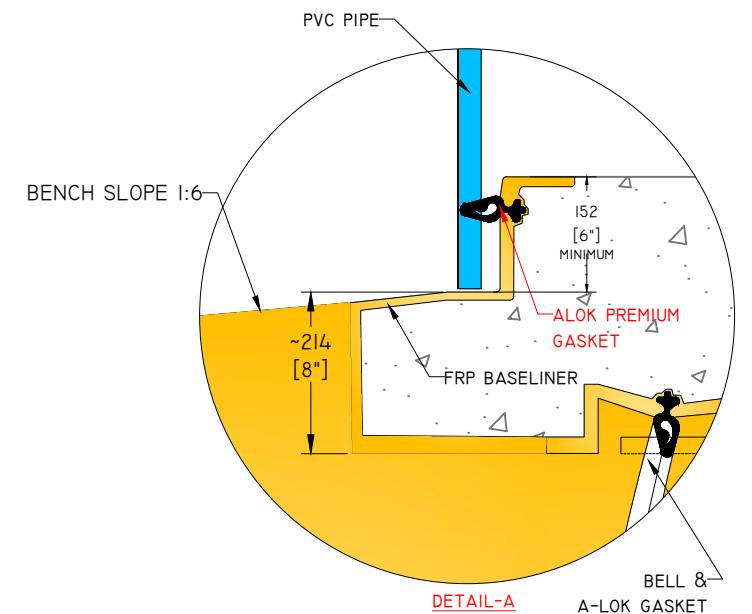
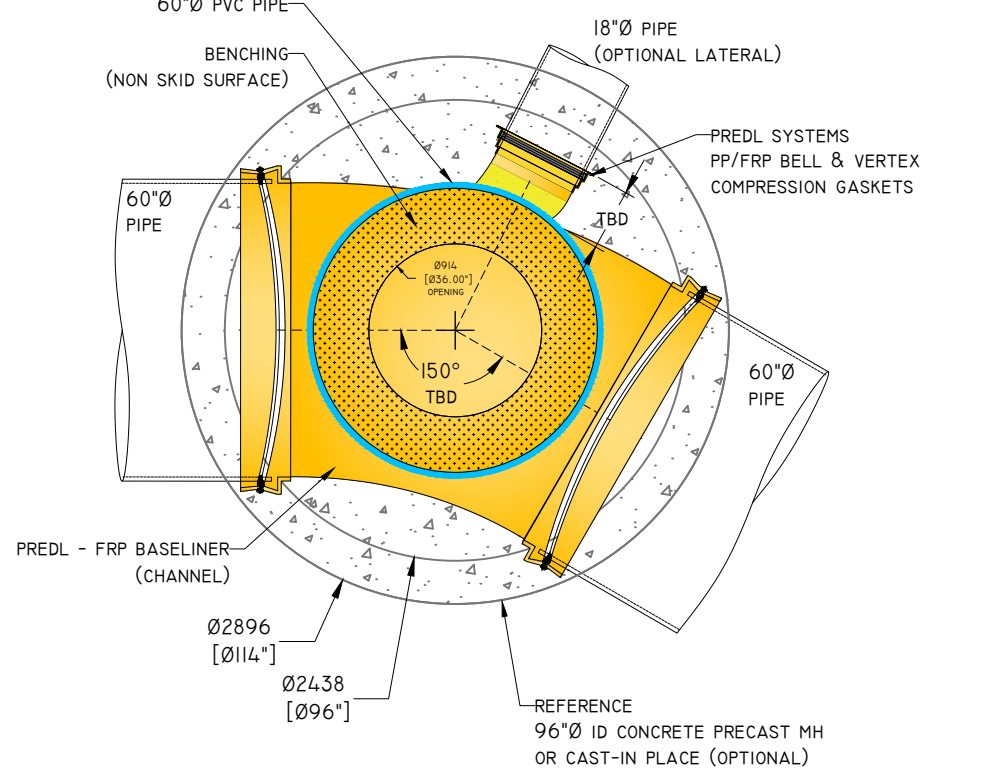
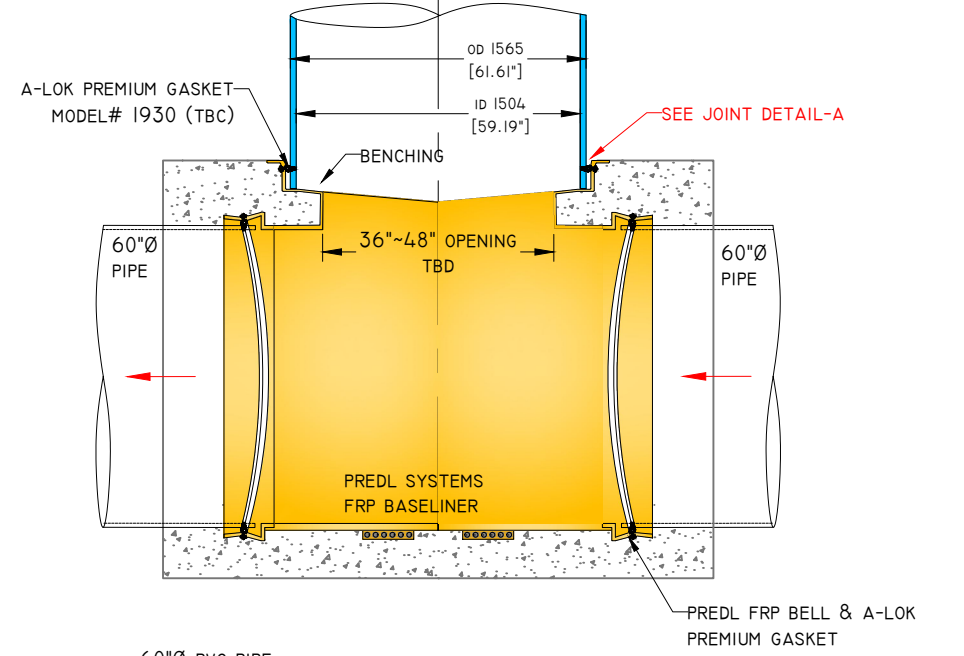
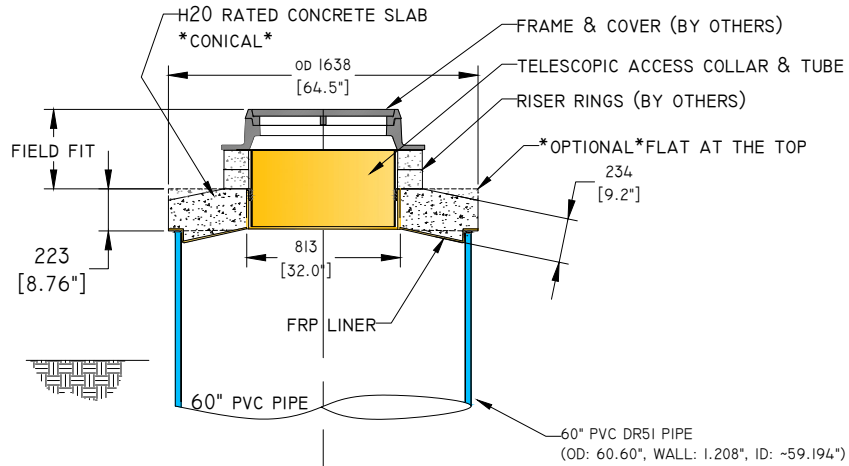


- SPECIFICATIONS**
1. THIS DRAWING REPRESENTS THE CONCRETE PROTECTIVE LINER DESIGN. ALL CONCRETE DIMENSIONS MUST BE VERIFIED BY THE CONTRACTOR OR PRECAST CONCRETE MANUFACTURER.
 2. ALL "PIPE TO MANHOLE" CONNECTIONS SHALL HAVE GASKETS AS SHOWN IN THE DRAWINGS UNLESS OTHERWISE NOTED. PREDL SYSTEMS WILL ONLY RECOMMEND WHAT TYPE OF GASKET SHALL BE USED.
 3. ALL PIPE GASKETS SHALL BE INSTALLED USING THE MANDREL RECOMMENDED BY THE GASKET MANUFACTURER.
 4. ONLY PREDL CERTIFIED WELDERS AND FABRICATORS ARE AUTHORIZED TO FABRICATE, REPAIR, WELD, OR TEST THE LINERS.
 5. PREDL LINER IS A NON-STRUCTURAL ELEMENT. ALL PRECAST CONCRETE SHALL BE DESIGNED, CONSTRUCTED AND INSTALLED IN ACCORDANCE WITH LOCAL STANDARDS PRIOR TO FINAL INSTALLATION AND TESTING.
 6. ROUND PRECAST MANHOLES TYPICALLY DESIGNED TO ASTM C478. NON-ROUND MANHOLE STRUCTURES TYPICALLY DESIGNED TO ASTM C913.



FIBERGLASS REINFORCED POLYMER (FRP)
TYPICAL PHYSICAL PROPERTIES

(FOR COMPONENTS) TESTING METHOD		COMP. A	COMP. B
VISCOSITY, CPS	BROOKFIELD L.V.F. SPINDLE #2 @ 30 RPM	200	400 - 600
SPECIFIC GRAVITY	ASTM D-1638	1.20	1.15
WEIGHT PER GAL. LBS.		10.00	9.58
COLOUR	VISUAL	DARK BROWN	LIGHT BROWN
STYRENE MONOMER CONTENT	ASTM D-1638	1.20	1.15
MIX RATIO	BY WEIGHT	31	69
(FOR CURED MATERIAL) TESTING METHOD		RESULTS (0% GLASS)	
TENSILE STRENGTH, PSI	ASTM D-638	13,000	
TENSILE MODULUS, PSI	ASTM D-638	450,000	
FLEXURAL STRENGTH, PSI	ASTM D-790	28,000	
FLEXURAL MODULUS, PSI	ASTM D-790	400,000	
HEAT DISTORTION TEMP.	ASTM D-648	160° F	
ELONGATION, %	ASTM D-638	4	
BARCOL HARDNESS		42	
SHORE D HARDNESS		85	
LINEAR SHRINKAGE, %	ASTM D-2566-88	85	
REACTIVITY DATA (100 GRAM MASS @ 74° F)			
DEMOLD TIME		10 - 15 MIN.	
GEL TIME		120 - 180 SECONDS	
PERFORMANCE CHARACTERISTICS			
FIBER WETTING		EXCELLENT	
SAGGING / DRAINING		MINIMAL	
FABRICATING METHOD		ALL ROOM TEMPERATURE METHODS	

7520 CONRAD STREET
BURNABY, B.C. V5A 2H7
PHONE : 604 415-9944
FAX : 604 415-9954

DRAWN BY:	DATE DRAWN:
-	4/12/2018

NOTES: PRELIMINARY ONLY

REV NO	DATE/DESCRIPTION
3	5/24/2018
5	5/25/2018
8	6/27/2018
-	-
-	-
-	-
-	-
-	-
-	-
-	-
-	-
-	-
-	-
-	-
-	-
-	-
-	-
-	-
-	-
-	-
-	-
-	-

SPECIFIED FOR:

-

PROJECT DESCRIPTION:
FRP TEE MANHOLE

DRAWING DESCRIPTION:
FRP TEE MANHOLE

FRP TEE MANHOLE

DWG NO: 2141977-FRP TEE	REV NO: 8
----------------------------	--------------

SCALE:
AS NOTED

CLIENTS JOB NUMBER: