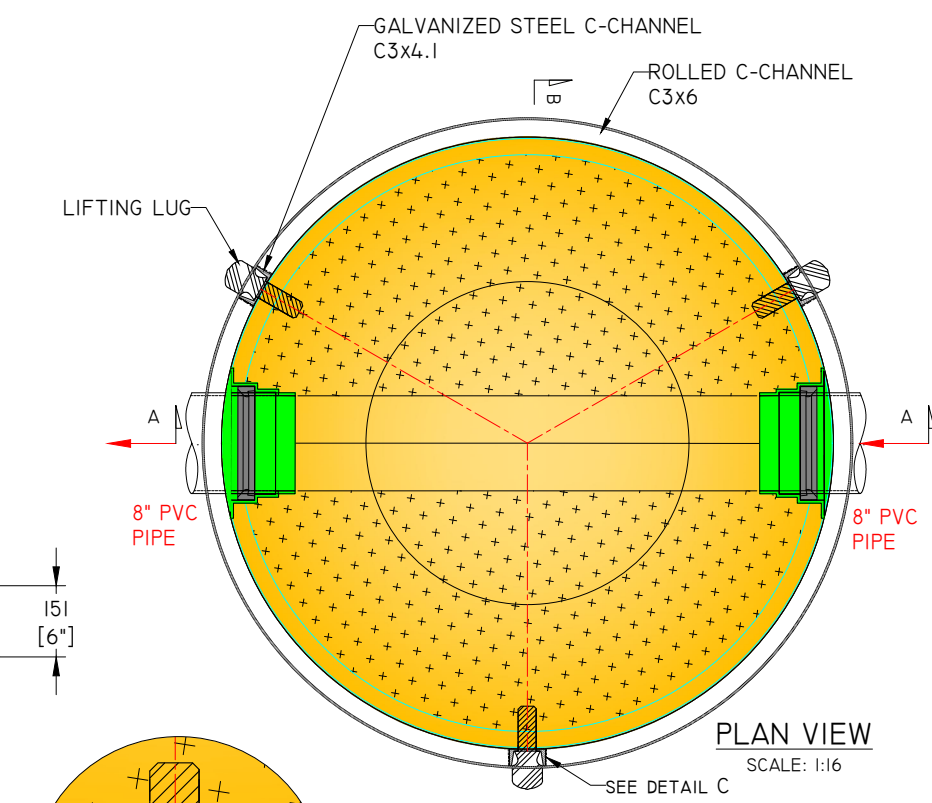
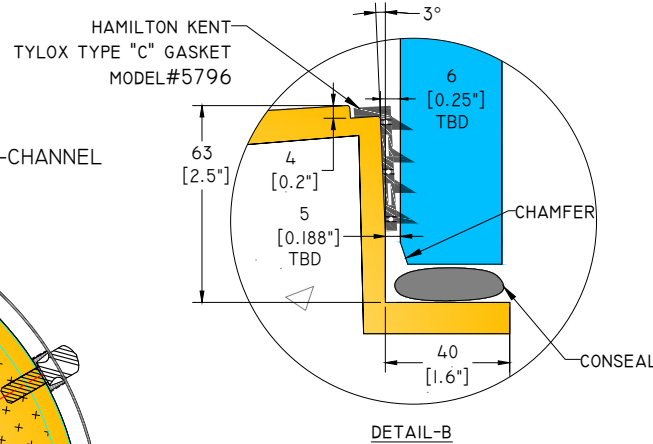
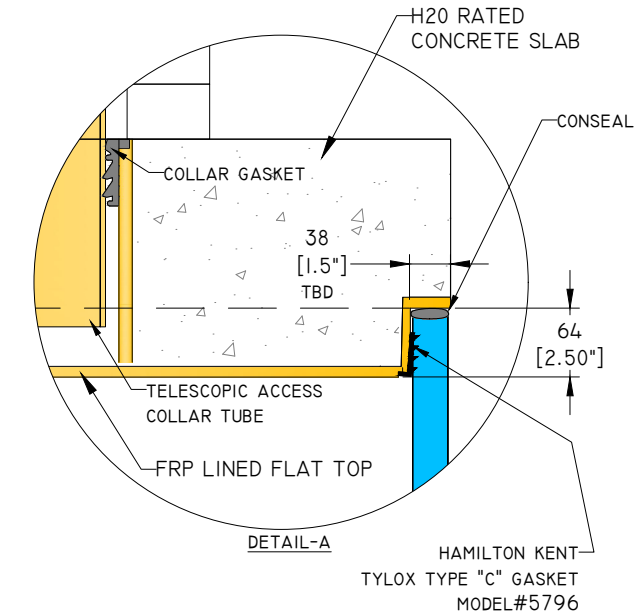
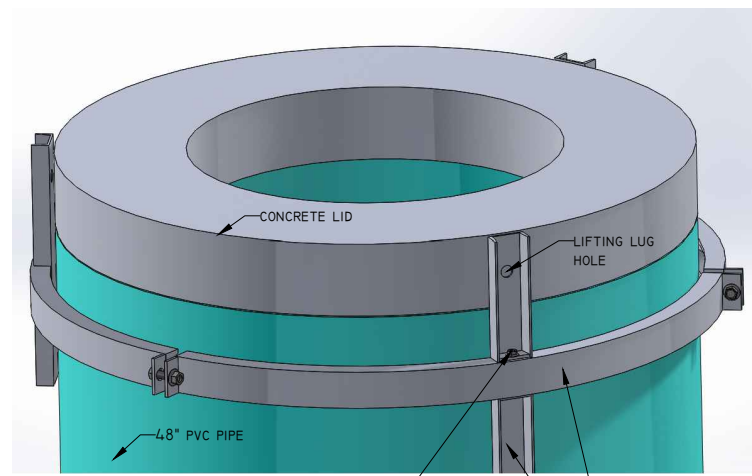
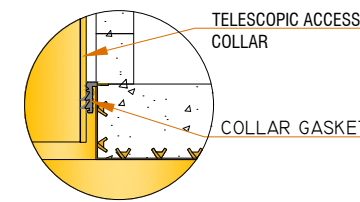
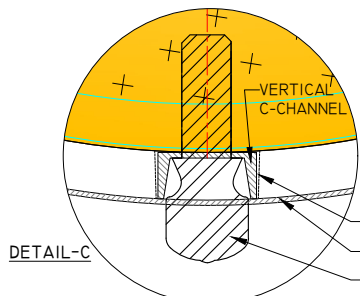


SECTION A-A
SCALE: 1:16

SECTION B-B
SCALE: 1:16



PLAN VIEW
SCALE: 1:16



TELESCOPIC ACCESS COLLAR DETAIL
N.T.S.

CONCRETE BASE WEIGHT: ~2,200 LBS
CONCRETE LID WEIGHT: ~900 LBS

FIBERGLASS REINFORCED POLYMER (FRP)			
TYPICAL PHYSICAL PROPERTIES			
(FOR COMPONENTS)	TESTING METHOD	COMP. A	COMP. B
VISCOSITY, CPS	BROOKFIELD L.V.F. SPINDLE #2 @ 30 RPM	200	400 - 600
SPECIFIC GRAVITY	ASTM D-1638	1.20	1.15
WEIGHT PER GAL. LBS.		10.00	9.58
COLOR	VISUAL	DARK BROWN	LIGHT BROWN
STYRENE MONOMER CONTENT		20 % IN SYSTEM	
MIX RATIO	BY WEIGHT	31	69
(FOR CURED MATERIAL)	TESTING METHOD	RESULTS (0% GLASS)	
TENSILE STRENGTH, PSI	ASTM D-638	13,000	
TENSILE MODULUS, PSI	ASTM D-638	450,000	
FLEXURAL STRENGTH, PSI	ASTM D-790	28,000	
FLEXURAL MODULUS, PSI	ASTM D-790	400,000	
HEAT DISTORTION TEMP.	ASTM D-648	160° F	
ELONGATION, %	ASTM D-638	4	
BARCOL HARDNESS		42	
SHORE D HARDNESS		85	
LINEAR SHRINKAGE, %	ASTM D-2566-88	85	
REACTIVITY DATA (100 GRAM MASS @ 74° F)			
DEMOLD TIME		10 - 15 MIN.	
GEL TIME		120 - 180 SECONDS	
PERFORMANCE CHARACTERISTICS			
FIBER WETTING		EXCELLENT	
SAGGING / DRAINING		MINIMAL	
FABRICATING METHOD		ALL ROOM TEMPERATURE METHODS	

REV NO	DATE/DESCRIPTION
3	16/11/2017
-	-
-	-
-	-
-	-
-	-
-	-
-	-
-	-

SPECIFIED FOR:
DIAMOND PLASTICS

PROJECT DESCRIPTION:
PRELIMINARY ONLY PVC MANHOLE

DRAWING DESCRIPTION:
MH#1

DWG NO:	REV NO:
2141977-MHI	2

SCALE:
AS NOTED
CLIENT'S JOB NUMBER:

SPECIFICATIONS

- THIS DRAWING REPRESENTS THE CONCRETE PROTECTIVE LINER DESIGN. ALL CONCRETE DIMENSIONS TO BE VERIFIED FROM THE CONTRACTOR OR PRECAST CONCRETE MANUFACTURER.
- ALL "PIPE TO MANHOLE" CONNECTIONS SHALL HAVE GASKETS AS SHOWN IN THE DRAWINGS UNLESS OTHERWISE NOTED.
- ALL PIPE GASKETS SHALL BE INSTALLED USING THE MANDREL RECOMMENDED BY THE GASKET MANUFACTURER.
- ONLY PREDL CERTIFIED WELDERS AND FABRICATORS ARE AUTHORIZED TO FABRICATE, REPAIR, WELD, OR TEST THE LINERS.
- ALL LINER SECTIONS SHALL BE WELDED OR JOINED TOGETHER AS PER THE MANUFACTURER INSTRUCTIONS UNLESS OTHERWISE NOTED.
- LINER IS NOT TO BE COMPROMISED BY DRILLING OR PUNCTURING UNLESS SPECIFIED AND APPROVED BY PREDL LINER MANUFACTURER. PERFORATION OF LINER TO INSTALL LADDER RUNGS IS NOT RECOMMENDED.
- PREDL CONCRETE LINER IS A NON-STRUCTURAL ELEMENT. ALL PRECAST CONCRETE SHALL BE DESIGNED, CONSTRUCTED AND INSTALLED IN ACCORDANCE WITH LOCAL STANDARDS PRIOR TO FINAL INSTALLATION AND TESTING OF CPL.
- ROUND MANHOLE STRUCTURES TYPICALLY DESIGNED TO ASTM C478. NON-ROUND MANHOLE STRUCTURES TYPICALLY DESIGNED TO ASTM C913.
- PRECAST CONCRETE STRUCTURE WITH INTEGRAL PREDL CPL TO BE VACUUM TESTED IN ACCORDANCE WITH ASTM C1244 PRIOR TO FINAL INSTALLATION AND TESTING OF CPL.